



徐州炎黄工程机械有限公司

CNS Machinery (Xuzhou) Co., Ltd.

船吊手册

Marine Crane Manual



徐州炎黄工程机械有限公司

CNS Machinery (Xuzhou) Co., Ltd.

地址:江苏省徐州市铜山经济开发区

Add: Tongshan Economic Development Zone, Xuzhou, JiangSu province, China.

电话(Tel) : (0086) 178 2648 0652

邮箱 (E-mail) : admin@cnsmach.com marketing@cnsmach.com



www.cnsmach.com

cnsmach.en.made-in-china.com

www.cnsmach.com

cnsmach.en.made-in-china.com

提供最耐用的解决方案
OFFER YOU THE MOST DURABLE SOLUTIONS



徐州炎黄工程机械有限公司

CNS Machinery (Xuzhou) Co., Ltd.

CNS集团位于徐州市，是一家集

起重机械工厂：包括船用起重机、车载起重机、高空作业车及汽车尾板——CNS机械（徐州）有限公司。

液压油缸工厂：安徽炎黄液压科技有限公司 & 徐州炎黄工程机械有限公司。

健康护理产品：智能植物工厂与氧气舱工厂——CNS机械（宿州）有限公司。

自2006年工厂成立以来，通过从原材料到成品的严格检验体系，现已发展成为集研发、生产制造、国内运输系统和销售为一体的企业。基于快速发展和增长，我们于2015年开始出口，并于2023年将工厂面积扩建至60000平方米，以满足更高的需求。

CNS从原材料到成品都有严格的检验体系，“质量永不妥协”是基本原则，拥有ISO9001、BV、CE 以及 CCS、ABS、DNV、API2C、RMRS、IRS船用起重机认证。

CNS每年将近四分之一的销售额投入到研发中，并为国内外客户提供OEM/ODM服务，产品远销中东、东南亚、南美、俄罗斯、土耳其及其他欧洲国家。



CNS Group, located in Xuzhou city, is a group enterprise with:

Lifting machinery factory including marine crane, truck mounted crane, aerial work vehicle and truck tail lift -CNS Machinery (Xuzhou) Co., Ltd.

Hydraulic cylinder factory-Yanhuang hydraulic cylinder (Anhui) Co., Ltd & Yanhuang hydraulic cylinder (Xuzhou) Co., Ltd.

Health care product: Smart plant factory and Oxygen Chamber factory-CNS Machinery(Suzhou) Co., Ltd.

By maintaining strict inspection systems from raw materials to finished product, since 2006 when the factory was established, and now has integrated R&D, fabrication and domestic transportation systems and sales. Based on rapid development and growth, we started export in 2015, and expanded our factory to 60000 m2 in 2023 to meet the higher demand.

CNS has strict inspection systems from raw materials to finished products, 'Never compromise in quality' is the basic principle ,with ISO9001, BV, CE, and CCS, ABS, DNV, API2C, RMRS, IRS cert. for marine cranes.

CNS invests nearly quarter of saleroom in R&D and provides OEM/ODM service for both in and abroad. CNS products have been exported to Middle East, South East Asia, South America , Russia , Turkey and other European countries.

VISION

Let China's shipbuilding industry go global and technology lead the world.

STRATEGIC GOAL

To become a leader among MARINE equipment enterprises.

MISSION

Is to revitalize China's shipbuilding industry.

OVERALL STRATEGY

Diversified production, technological reform.

GLOBAL SALES NETWORK

世界销售网络



- 我们拥有20多年起重设备、高空作业设备生产经验。我们在全球多个国家拥有代理和独家代理权。
- 7/24售后服务响应, 并逐步建立海外售后和零部件库存。
- 我们的产品出口到全球**124个**国家和地区。

- We have more than 20 years Experience in Crane and aerial work platform production.
- We are expanding agent and exclusive agents overseas
- 7/24 After sale service and we are establishing overseas after-sale network and spares stock
- Our Cranes are Exported to **124 Countries and Regions** Around the World.



CERTIFICATE 证书



PARTNER 合作伙伴

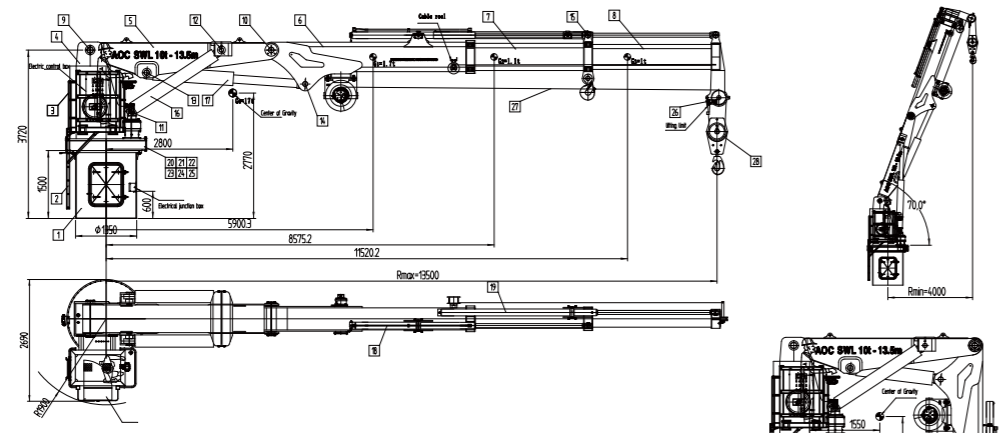


PARTNER

CUSTOMIZED MARINE CRANE 全定制船用吊机

Customized according to working situation, can be designed with API-2C and certificated with ABS/CCS/BV/DNV-
V/RMRS/RS/IRS etc.

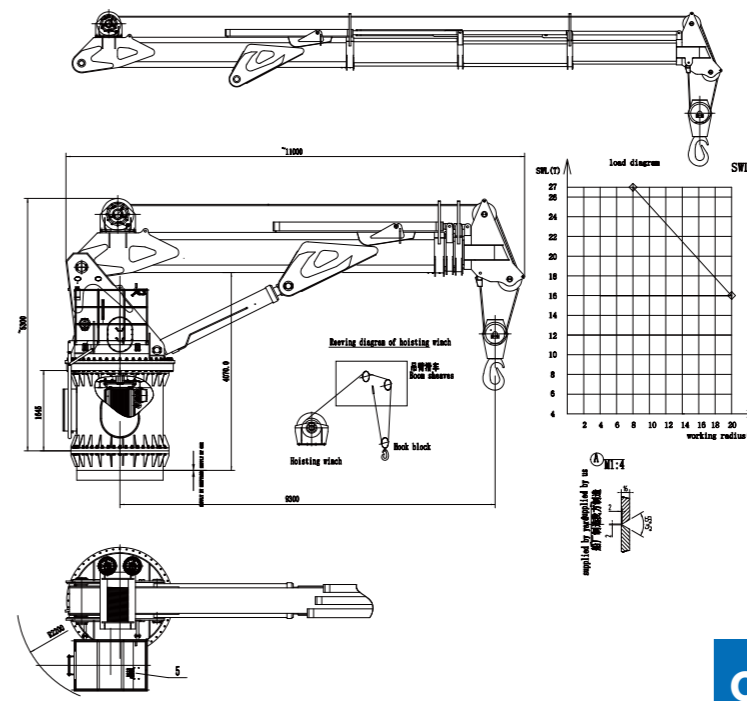




Technical Data	
SWL	10t
Working Length	155m
Hoisting Height	30m
Hoisting Speed	0~20m/min
Slewing Speed	0~0.6r/min
Slewing Angle	0°~360°
Luffing Time	~90S
Trim	±2°
Motor	Y280S-4
Power	75kW
Speed	1780r/min
Protect Class	IP44
Insulate Class	F
Working Type	S1

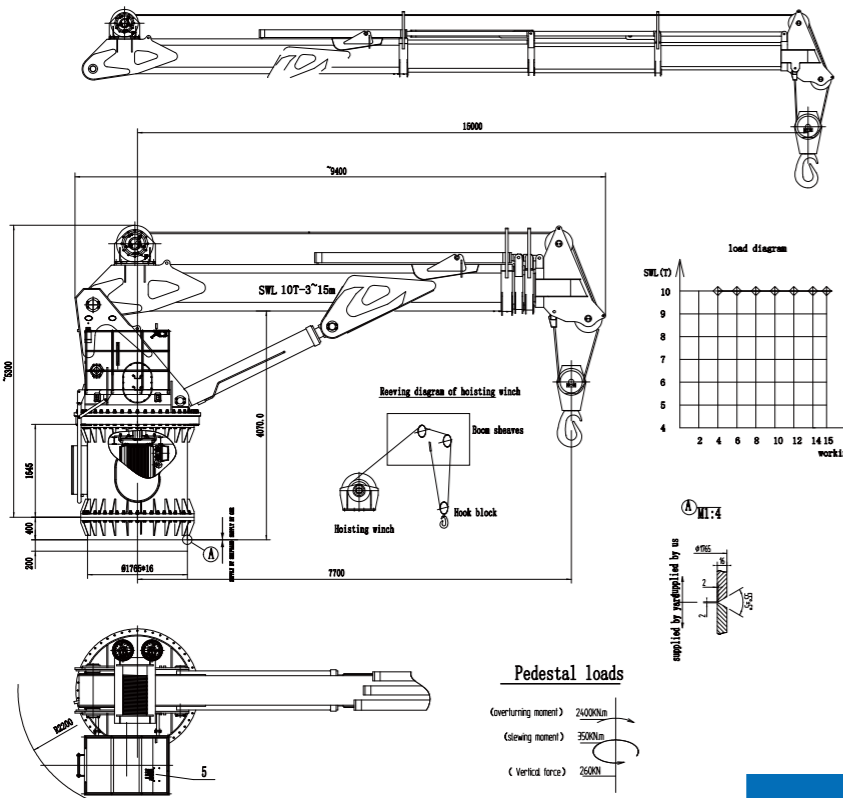
Note:
1. Designed this crane as per JPT 2C
2. Pre-lightning Surge is 70kV

Customized 10t@13.5m



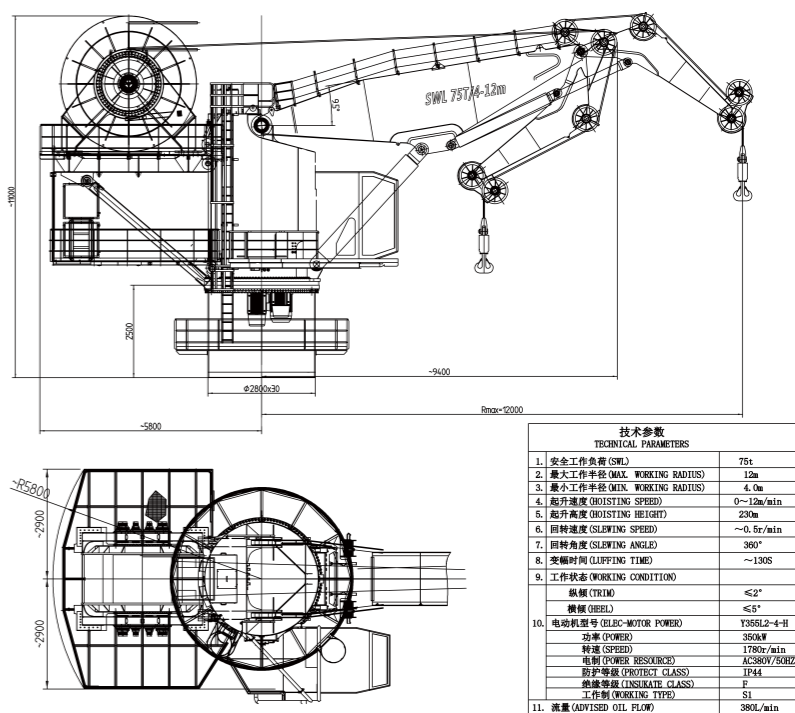
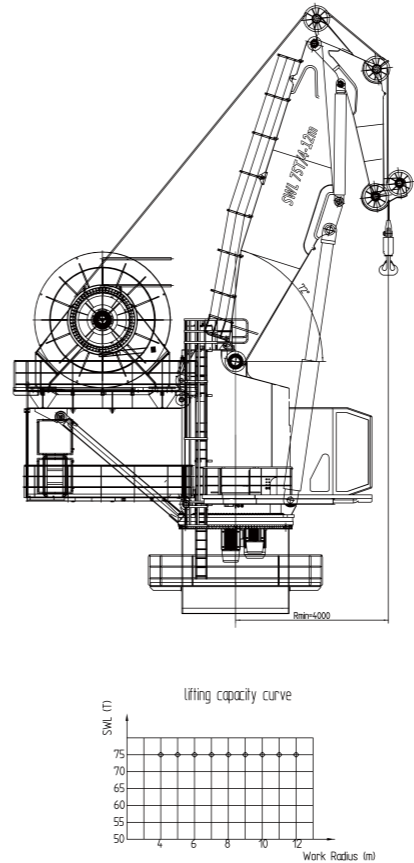
TECHNICAL PARAMETERS	
1. SWL	10T
2. MAX. WORKING RADIUS	20m
3. MIN. WORKING RADIUS	4m
4. HOISTING SPEED	0~20m/min
5. HOISTING HEIGHT	30m
6. SLEWING SPEED	0~0.6r/min
7. SLEWING ANGLE	360°
8. LUFFING TIME	~90S
9. WORKING CONDITION	
TRIM	±2°
HEEL	≤5°
10. ELBEC-MOTOR POWER	Y280S-4-H
POWER	75kW
SPEED	1780r/min
POWER RESOURCE	AC380V/50HZ
PROTECT CLASS	IP44
INSULATE CLASS	F
WORKING TYPE	S1

Customized 10t@4~20m



TECHNICAL PARAMETERS	
1. SWL	10t
2. MAX. WORKING RADIUS	15m
3. MIN. WORKING RADIUS	3m
4. HOISTING SPEED	~20m/min
5. HOISTING HEIGHT	30m
6. SLEWING SPEED	~0.6r/min
7. SLEWING ANGLE	360°
8. LUFFING TIME	~90S
9. WORKING CONDITION	
TRIM	±2°
HEEL	≤5°
10. ELBEC-MOTOR POWER	Y280S-4-H
POWER	75kW
SPEED	1780r/min
POWER RESOURCE	AC380V/50HZ
PROTECT CLASS	IP44
INSULATE CLASS	F
WORKING TYPE	S1

Customized 10t@3~15m



技术参数 TECHNICAL PARAMETERS	
1. 安全工作负荷 (SWL)	75t
2. 最大工作半径 (MAX. WORKING RADIUS)	12m
3. 最小工作半径 (MIN. WORKING RADIUS)	4.0m
4. 起升速度 (HOISTING SPEED)	0~12m/min
5. 起升高度 (HOISTING HEIGHT)	230m
6. 回转速度 (SLEWING SPEED)	~0.6r/min
7. 回转角度 (SLEWING ANGLE)	360°
8. 变幅时间 (LUFFING TIME)	~130S
9. 工作状态 (WORKING CONDITION)	
俯仰 (TRIM)	±2°
倾斜 (HEEL)	≤5°
10. 电动机型号 (ELBEC-MOTOR POWER)	T355L2-4-H
功率 (POWER)	355kW
转速 (SPEED)	1780r/min
电源 (POWER RESOURCE)	AC380V/50HZ
防护等级 (PROTECT CLASS)	IP44
绝缘等级 (INSULATE CLASS)	F
工作制 (WORKING TYPE)	S1
11. 油量 (ADVISED OIL FLOW)	380L/min

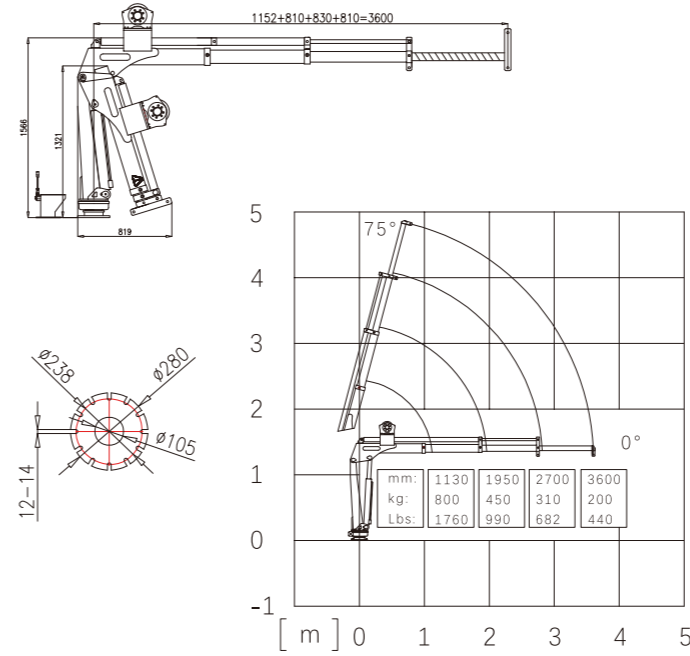
Customized 75t@4~12m

STANDARD MODEL MARINE CRANE 标准型号船用吊机

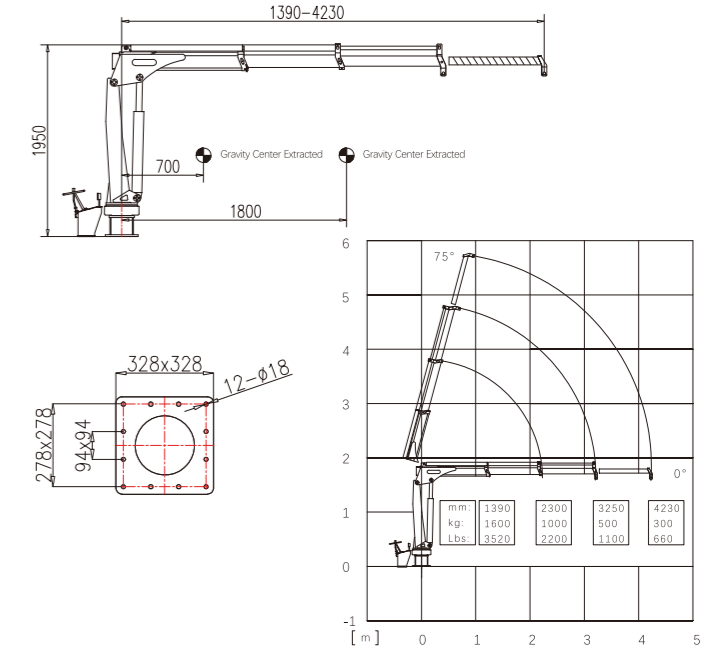
Standard model, can be designed with API-2C and certificated with ABS/CCS/BV/DNV/RMRS/RS/IRS etc.



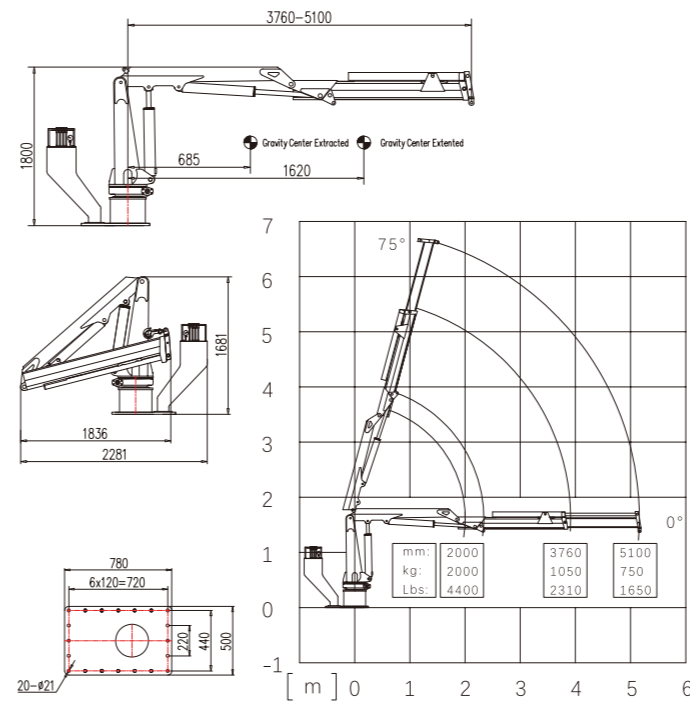
SQ08ZA3TJ+1



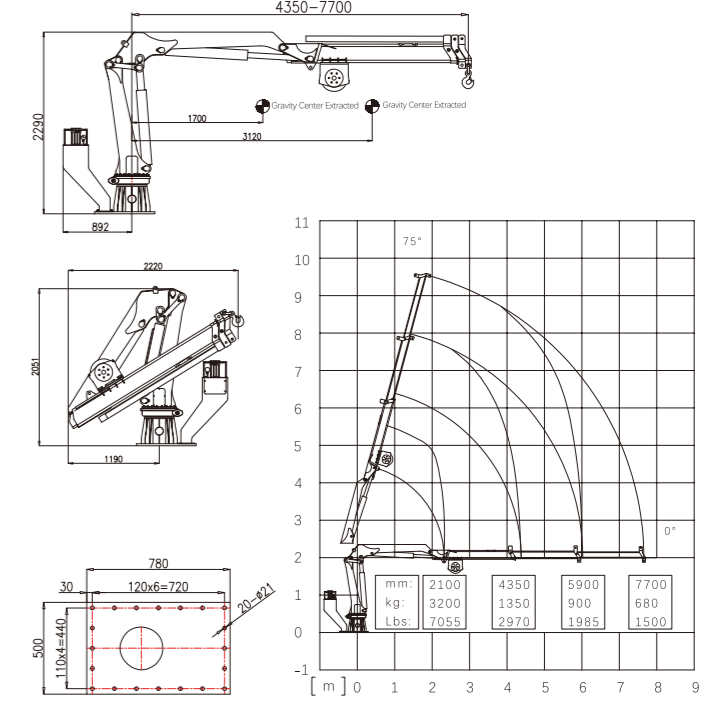
SQ1ZA3T+1



SQ2ZA2T

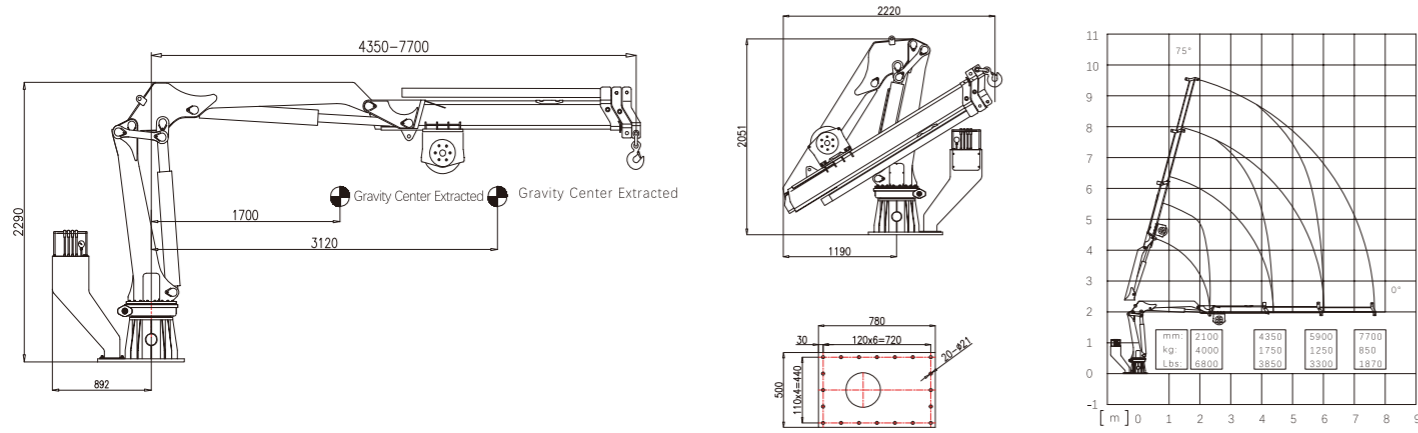


SQ3.2ZA3TJ

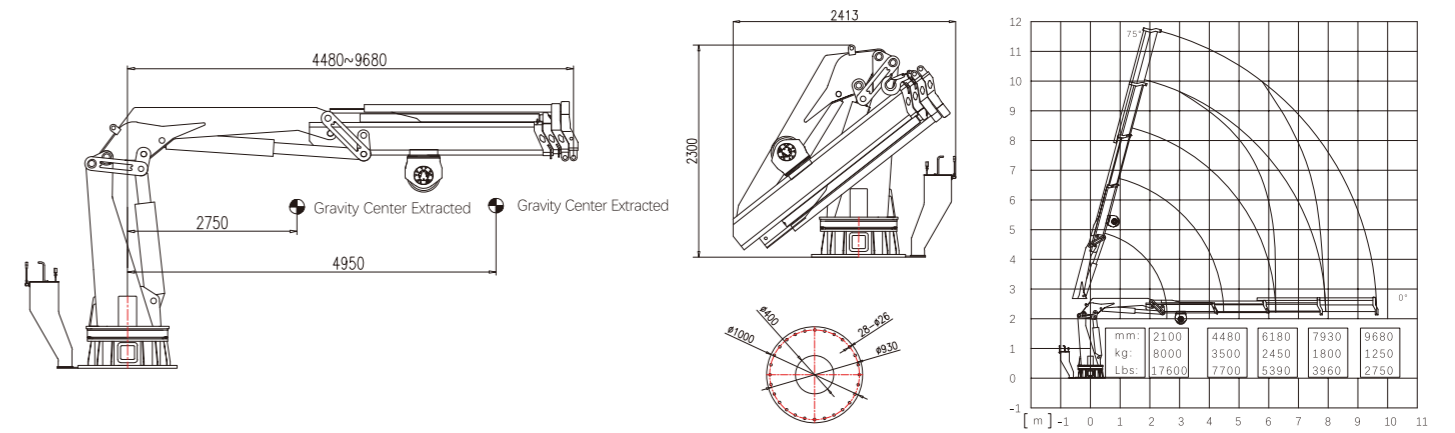


项目	Item	单位 Unit	SQ08ZA3TJ+1	SQ1ZA3T+1	SQ2ZA2T	SQ3.2ZA3TJ
最大起重质量	Max Lifting Capacity	Kg	800	1600	2000	3200
最大起重力矩	Max Lifting Moment	Ton.m	1	2.2	4.2	6.8
推荐功率	Recommend Power	KW	2.5	7.5	9	11
液压系统流量	Hydraulic System Flow	L/Min	8	15	20	25
液压系统压力	Hydraulic System Pressure	MPa	16	18	20	25
油箱容积	Oil Tank Capacity	L	15	25	25	60
起重机自重	Self Weight	Kg	280	550	620	1250
回转角度	Rotation Angle	°	330	330	370	400

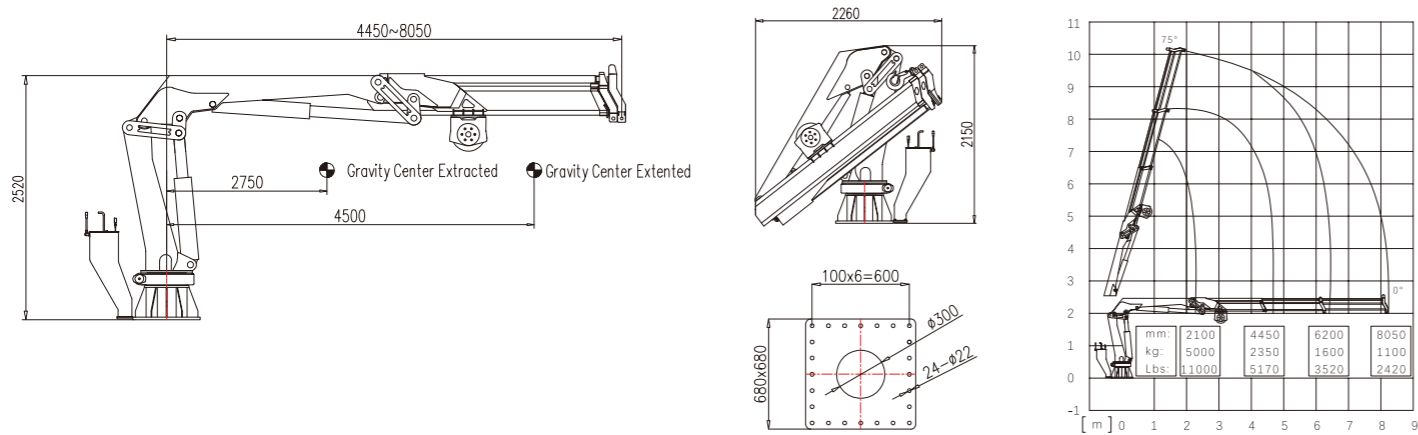
SQ4ZA3TJ



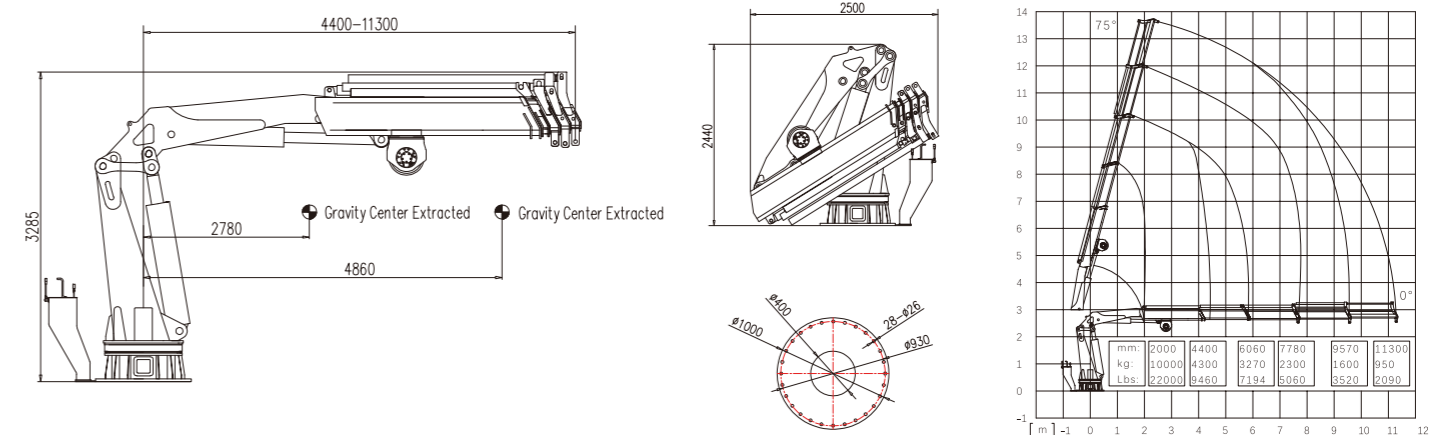
SQ8ZA4TJ



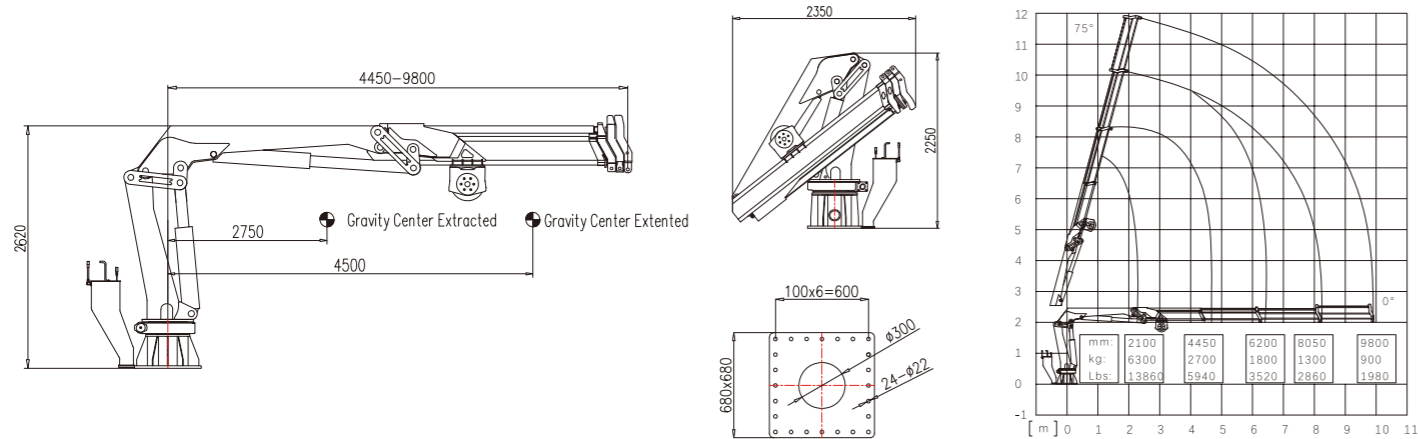
SQ5ZA3TJ



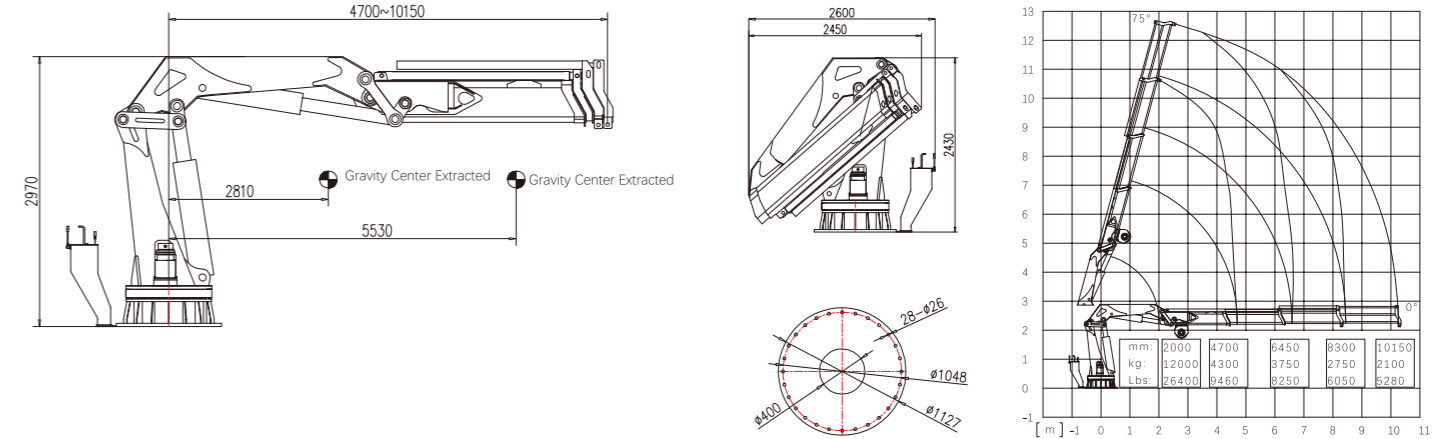
SQ10ZA5TJ



SQ6.3ZA4TJ



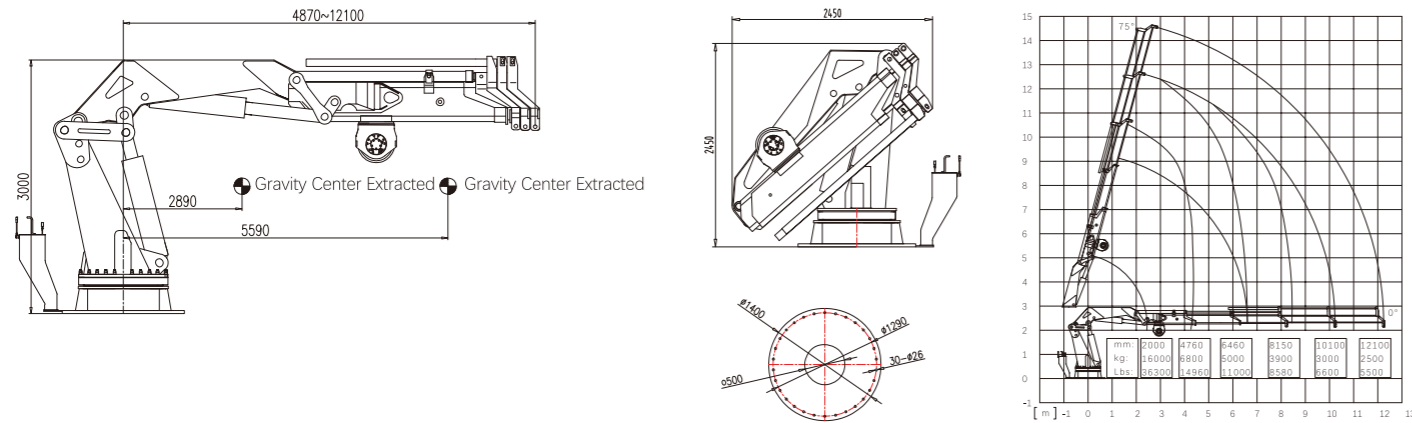
SQ12ZA4TJ



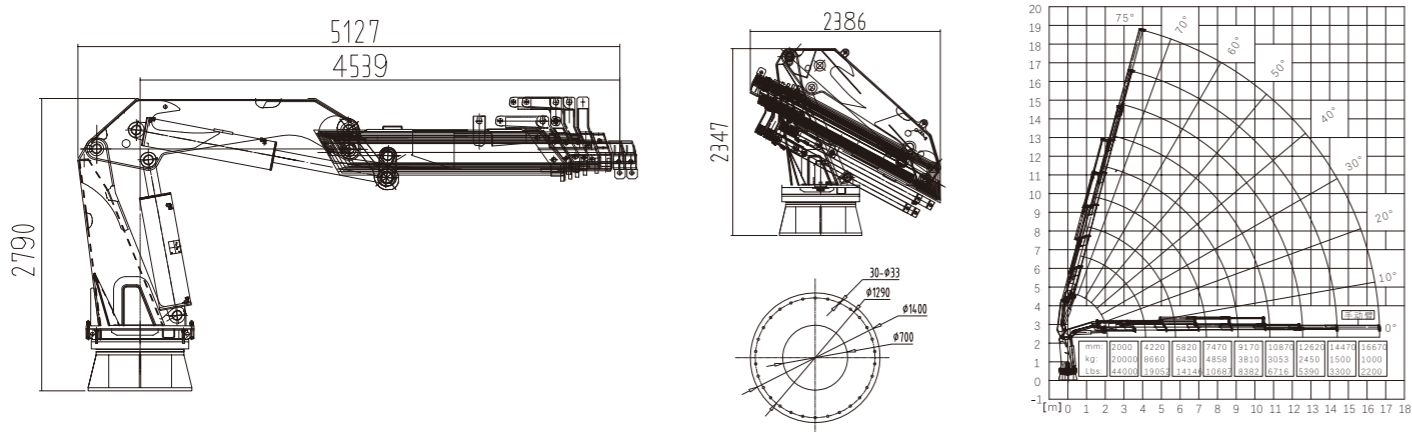
项目	Item	单位 Unit	SQ4ZA3TJ	SQ5ZA3TJ	SQ6.3ZA4TJ
最大起重质量	Max Lifting Capacity	Kg	4000	5000	6300
最大起重力矩	Max Lifting Moment	Ton.m	8.4	10.5	13
推荐功率	Recommend Power	KW	14	22	22
液压系统流量	Hydraulic System Flow	L/Min	25	35	35
液压系统压力	Hydraulic System Pressure	MPa	26	28	28
油箱容积	Oil Tank Capacity	L	60	100	100
起重机自重	Self Weight	Kg	1300	1680	2210
回转角度	Rotation Angle	°	400	360°全回转	360°全回转

项目	Item	单位 Unit	SQ8ZA4TJ	SQ10ZA5TJ	SQ12ZA4TJ
最大起重质量	Max Lifting Capacity	Kg	8000	10000	12000
最大起重力矩	Max Lifting Moment	Ton.m	16	20	27
推荐功率	Recommend Power	KW	25	30	30
液压系统流量	Hydraulic System Flow	L/Min	40	40	55
液压系统压力	Hydraulic System Pressure	MPa	28	28	28
油箱容积	Oil Tank Capacity	L	160	160	160
起重机自重	Self Weight	Kg	2550	3800	3950
回转角度	Rotation Angle	°	360°全回转	360°全回转	360°全回转

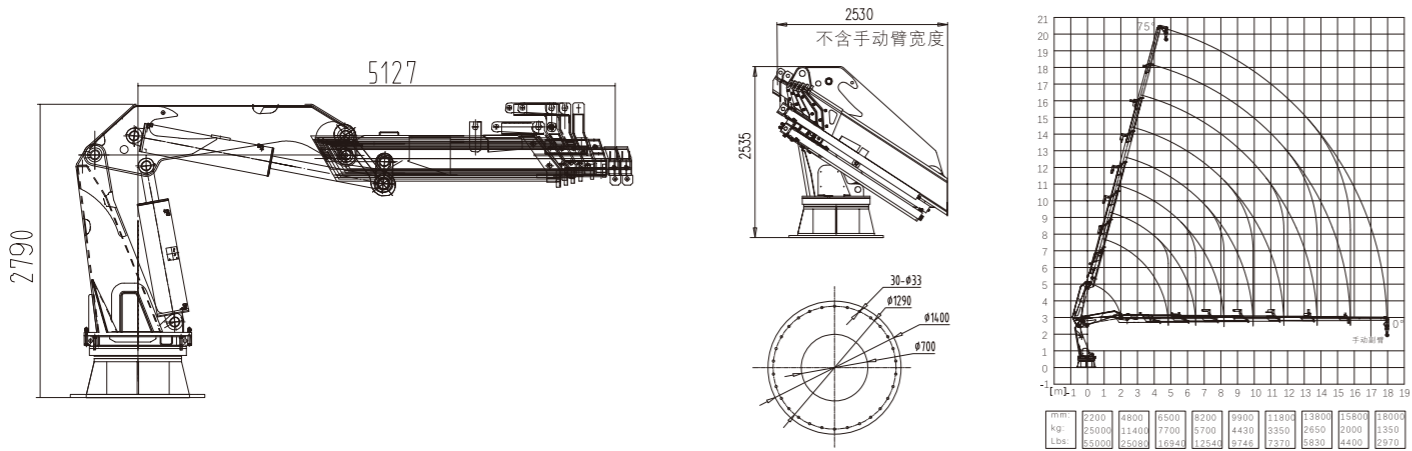
SQ16ZA5TJ



SQ20ZA7+1T

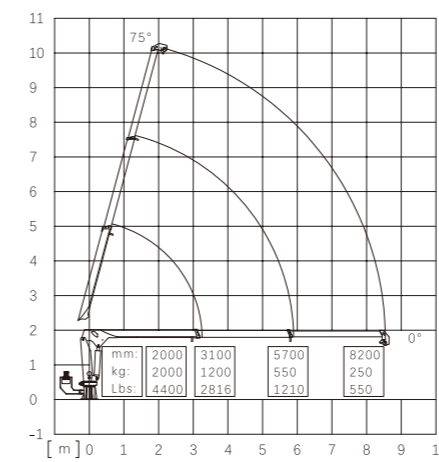
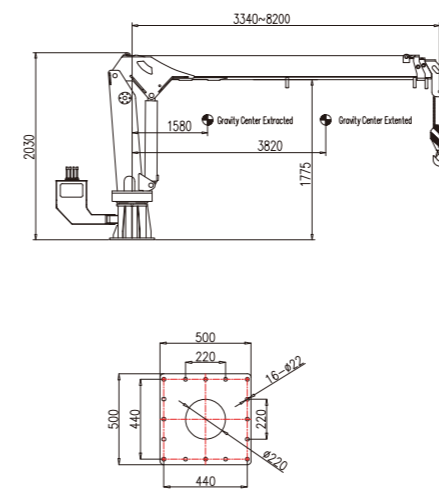


SQ25ZA7+1T



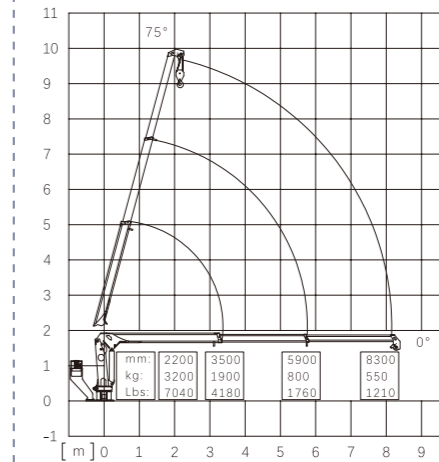
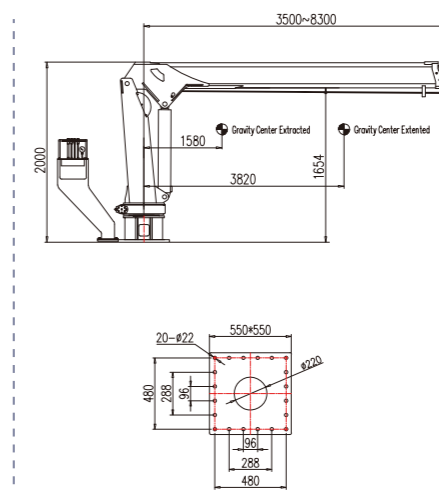
项目	Item	单位 Unit	SQ16ZA5TJ	SQ20ZA7+1T	SQ25ZA7+1T
最大起重质量	Max Lifting Capacity	Kg	16000	20000	25000
最大起重力矩	Max Lifting Moment	Ton.m	40	40	56
推荐功率	Recommend Power	KW	37	50	50
液压系统流量	Hydraulic System Flow	L/Min	55	80	80
液压系统压力	Hydraulic System Pressure	MPa	30	30	30
油箱容积	Oil Tank Capacity	L	200	260	260
起重机自重	Self Weight	Kg	4400	5800	6300
回转角度	Rotation Angle	°	360°全回转	360°全回转	360°全回转

SQ2SA3T



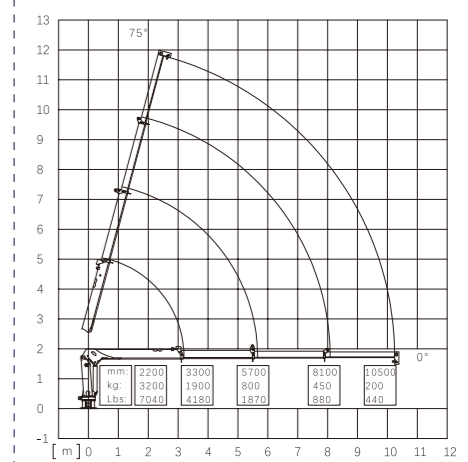
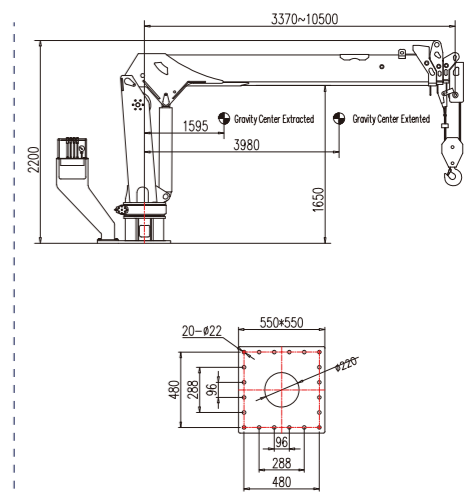
Boom Angle	boom length [m]		
	3.1	5.7	8.2
0°	3.10 / 1200	5.70 / 550	8.20 / 250
10°	3.05 / 1300	5.61 / 600	8.07 / 350
20°	2.91 / 1500	5.35 / 700	7.70 / 500
30°	2.68 / 1600	4.93 / 800	7.10 / 600
40°	2.37 / 1700	4.36 / 900	6.28 / 700
50°	1.99 / 1900	3.66 / 1000	5.26 / 800
60°	1.55 / 2000	2.85 / 1100	4.10 / 900
70°	1.06 / 2000	1.95 / 1200	2.80 / 900
75°	0.82 / 2000	1.47 / 1200	2.12 / 900

SQ3.2SA3T



Boom Angle	boom length (m)		
	3.5	5.9	8.3
0°	3.50 / 1900	5.90 / 800	8.30 / 550
10°	3.45 / 2190	5.81 / 900	8.17 / 600
20°	3.29 / 2190	5.54 / 1050	7.80 / 700
30°	3.03 / 2480	5.11 / 1230	7.18 / 780
40°	2.68 / 2960	4.52 / 1390	6.36 / 890
50°	2.25 / 3200	3.78 / 1660	5.33 / 1060
60°	1.75 / 3200	2.95 / 2130	4.15 / 1360
70°	1.19 / 3200	2.02 / 3120	2.84 / 1990
75°	0.91 / 3200	1.52 / 3200	2.15 / 2640

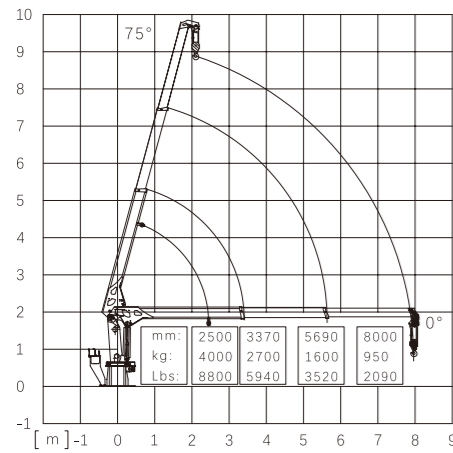
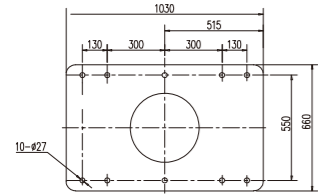
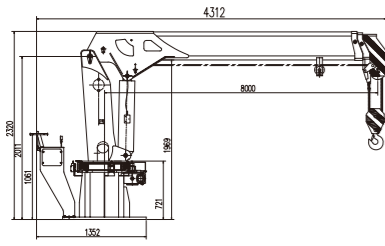
SQ3.2SA4T



Boom Angle	boom length (m)			
	3.3	5.7	8.1	10.5
0°	3.30 / 1900	5.70 / 800	8.10 / 550	10.5 / 200
10°	3.25 / 1940	5.61 / 823	7.97 / 580	10.3 / 270
20°	3.10 / 2030	5.35 / 860	7.61 / 600	9.86 / 280
30°	2.85 / 2200	4.93 / 940	7.01 / 660	9.09 / 300
40°	2.52 / 2490	4.36 / 1050	6.20 / 740	8.04 / 350
50°	2.11 / 3200	3.65 / 1260	5.20 / 810	6.74 / 420
60°	1.65 / 3200	2.85 / 1600	4.05 / 880	5.25 / 533
70°	1.12 / 3200	1.94 / 2370	2.77 / 1150	3.59 / 780
75°	0.85 / 3200	1.47 / 2500	2.09 / 1600	2.71 / 1030

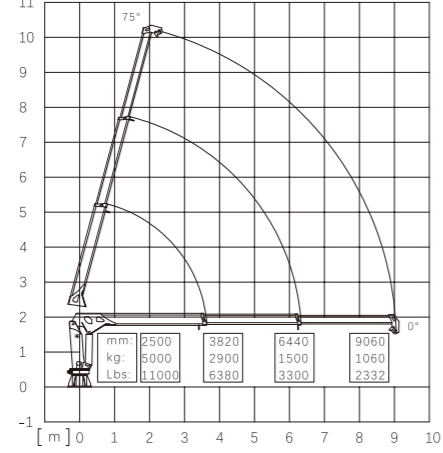
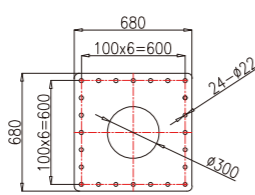
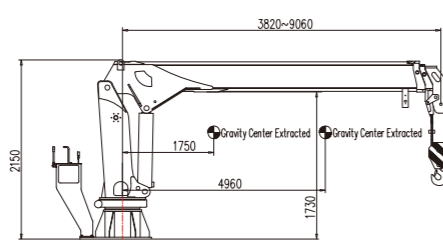
项目	Item	单位 Unit	SQ2SA3T	SQ3.2SA3T	SQ3.2SA4T
最大起重质量	Max Lifting Capacity	Kg	2000	3200	3200
最大起重力矩	Max Lifting Moment	Ton.m	4.2	6.8	6.8
推荐功率	Recommend Power	KW	8	14	14
液压系统流量	Hydraulic System Flow	L/Min	25	25	25
液压系统压力	Hydraulic System Pressure	MPa	16	20	20
油箱容积	Oil Tank Capacity	L	60	60	60
起重机自重	Self Weight	Kg	1000	1050	1250
回转角度	Rotation Angle	°	360°全回转	360°全回转	360°全回转

SQ4SA3T



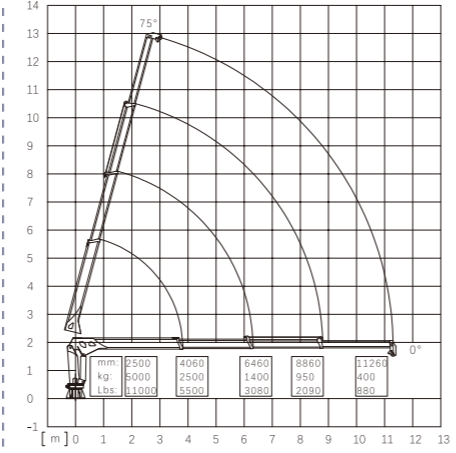
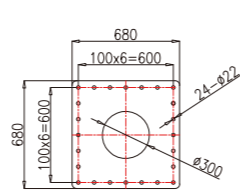
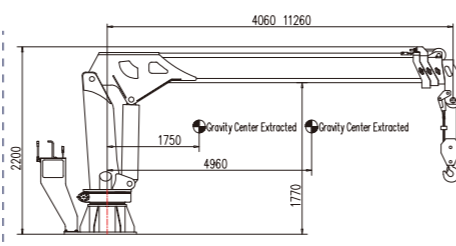
Boom Angle	boom length (m)		
	3.37	5.69	8
0°	3.37/2700	5.69/1600	8/950
10°	3.32/2700	5.6/1600	7.88/950
20°	3.17/2804	5.35/1700	7.52/1056
30°	2.92/2908	4.93/1800	6.93/1162
40°	2.58/3635	4.36/2000	6.13/1268
50°	2.17/4000	3.66/2500	5.14/1479
60°	1.69/4000	2.85/3000	4/1796
70°	1.15/4000	1.95/3200	2.74/3000
75°	0.87/4000	1.47/3200	2.07/3000

SQ5SA3T



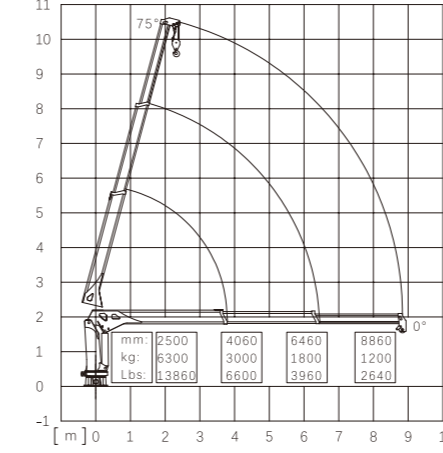
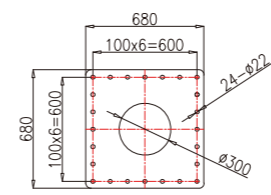
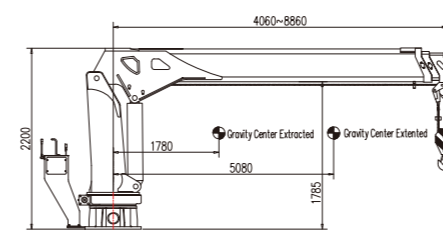
Boom Angle	boom length (m)		
	3.82	6.44	9.06
0°	3.82/2900	6.44/1500	9.06/1060
10°	3.76/3000	6.34/1550	8.92/1100
20°	3.58/3200	6.05/1700	8.51/1150
30°	3.30/3500	5.57/2000	7.85/1250
40°	2.92/4400	4.93/2200	6.94/1400
50°	2.45/5000	4.13/2600	5.82/1550
60°	1.91/5000	3.22/2900	4.53/1700
70°	1.30/5000	2.20/3200	3.01/1850
75°	0.99/5000	1.67/3200	2.35/1950

SQ5SA4T



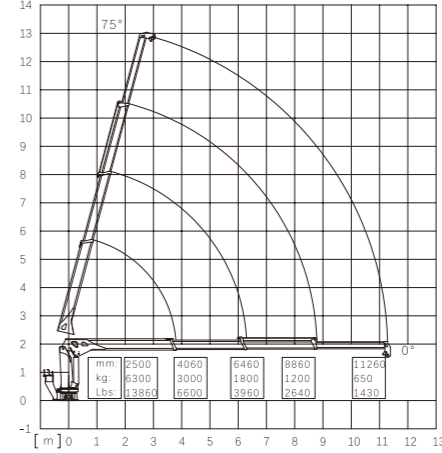
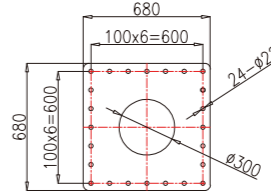
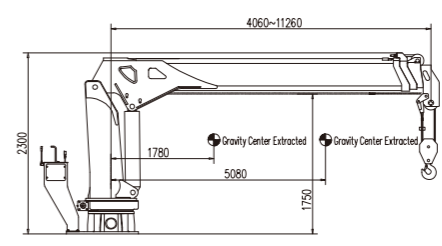
Boom Angle	boom length (m)			
	4.06	6.46	8.86	11.26
0°	4.06/2500	6.46/1400	8.86/950	11.26/400
10°	3.99/2550	6.36/1450	8.72/1000	11.08/420
20°	3.81/2750	6.07/1500	8.32/1050	10.58/440
30°	3.51/3130	5.59/1650	7.67/1150	9.75/470
40°	3.11/3650	4.95/1900	6.78/1250	8.62/530
50°	2.60/4500	4.15/2250	5.68/1450	7.22/650
60°	2.03/5000	3.23/2750	4.43/1720	5.63/850
70°	1.38/5000	2.21/2900	3.03/1800	3.85/1200
75°	1.05/5000	1.67/2900	2.29/1800	2.91/1250

SQ6.3SA3T



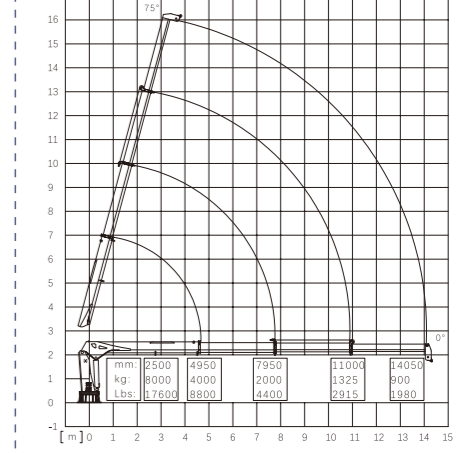
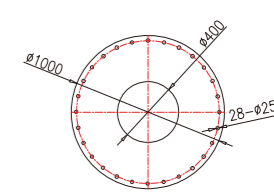
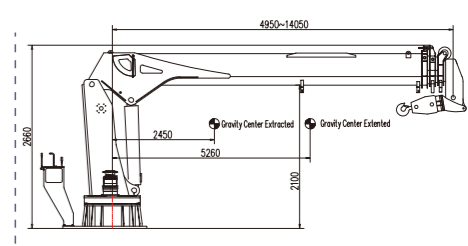
Boom Angle	boom length (m)			
	4.06	6.46	8.86	11.26
0°	4.06/3600	6.46/1800	8.86/1200	
10°	4.04/3800	6.40/1900	8.76/1200	
20°	3.88/4050	6.13/2000	8.39/1300	
30°	3.60/4350	5.68/2200	7.76/1500	
40°	3.20/4850	5.04/2400	6.88/1700	
50°	2.71/5800	4.25/2800	5.79/2000	
60°	2.11/6300	3.32/3000	4.52/2200	
70°	1.46/6300	2.28/3200	3.10/2200	
75°	1.10/6300	1.73/3200	2.35/2200	

SQ6.3SA4T



Boom Angle	boom length (m)			
	4.06	6.46	8.86	11.26
0°	4.06/3600	6.46/1800	8.86/1200	11.26/650
10°	4.04/3800	6.40/1900	8.76/1200	11.13/650
20°	3.88/4050	6.13/2000	8.39/1300	10.65/700
30°	3.60/4350	5.68/2200	7.76/1500	9.83/800
40°	3.20/4850	5.04/2400	6.88/1700	8.72/900
50°	2.71/5800	4.25/2800	5.79/2000	7.33/1000
60°	2.11/6300	3.32/3000	4.52/2200	5.72/1200
70°	1.46/6300	2.28/3200	3.10/2200	3.92/1400
75°	1.10/6300	1.73/3200	2.35/2200	2.97/1600

SQ8SA4T

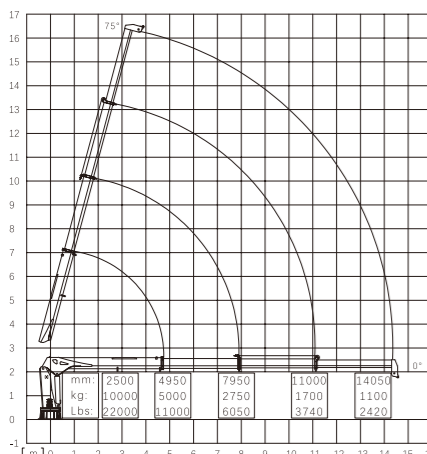
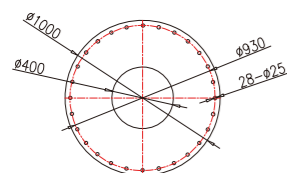
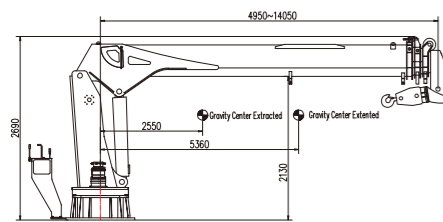


Boom Angle	boom length			
	4.95	7.95	11.0	14.05
0°	4.95/4000	7.95/2000	11.0/1300	14.05/900
10°	4.87/4100	7.82/2000	10.8/1300	13.83/900
20°	4.65/4300	7.47/2100	10.3/1300	13.20/960
30°	4.28/4600	6.88/2300	9.52/1500	12.16/1000
40°	3.79/5200	6.09/2600	8.42/1700	10.76/1200
50°	3.20/6300	5.10/3100	7.06/2000	9.02/1400
60°	2.47/8000	3.97/4000	5.50/3600	7.02/1800
70°	1.69/8000	2.71/5000	3.76/3800	4.80/2700
75°	1.28/8000	2.00/6500	2.84/3800	3.18/2700

项目	Item	单位 Unit	SQ4SA3T	SQ5SA3T	SQ5SA4T
最大起重质量	Max Lifting Capacity	Kg	4000	5000	5000
最大起重力矩	Max Lifting Moment	Ton.m	10	12.5	12.5
推荐功率	Recommend Power	KW	16	18	18
液压系统流量	Hydraulic System Flow	L/Min	25	32	32
液压系统压力	Hydraulic System Pressure	MPa	20	20	20
油箱容积	Oil Tank Capacity	L	100	100	100
起重机自重	Self Weight	Kg	1500	1850	2050
回转角度	Rotation Angle	°	360°全回转	360°全回转	360°全回转

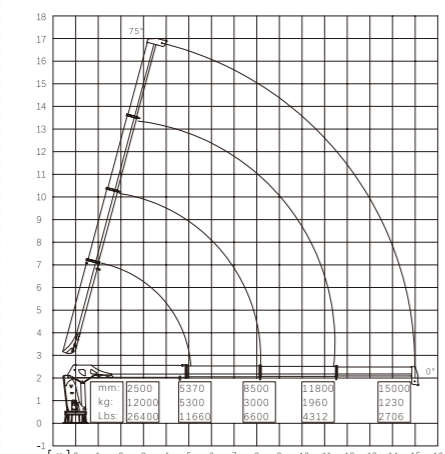
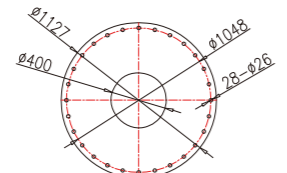
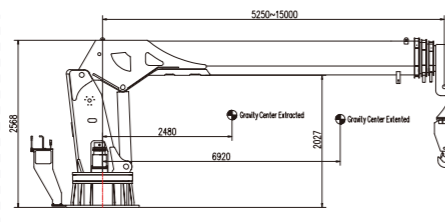
项目	Item	单位 Unit	SQ6.3SA3T	SQ6.3SA4T	SQ8SA4T
最大起重质量	Max Lifting Capacity	Kg	6300	6300	8000
最大起重力矩	Max Lifting Moment	Ton.m	16	16	20
推荐功率	Recommend Power	KW	22	22	27
液压系统流量	Hydraulic System Flow	L/Min	40	40	55
液压系统压力	Hydraulic System Pressure	MPa	20	20	24
油箱容积	Oil Tank Capacity	L	100	100	160
起重机自重	Self Weight	Kg	1950	2250	3100
回转角度	Rotation Angle	°	360°全回转	360°全回转	360°全回转

SQ10SA4T



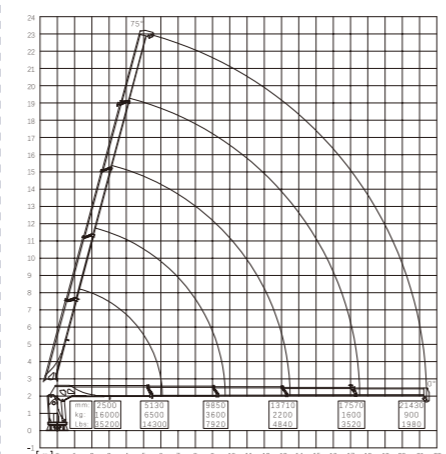
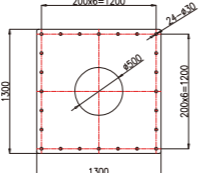
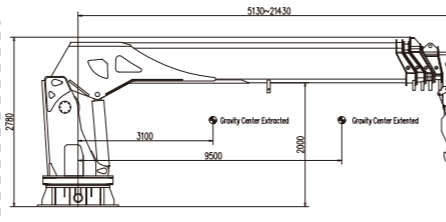
Boom Angle	boom length			
	4.95	7.95	11.0	14.05
0°	4.95 / 5000	7.95 / 2750	11.0 / 1700	14.05 / 1100
10°	4.87 / 5100	7.28 / 2794	10.8 / 1800	13.83 / 1200
20°	4.65 / 5300	7.47 / 2900	10.3 / 1900	13.20 / 1200
30°	4.28 / 5800	6.88 / 3200	9.52 / 2000	12.16 / 1300
40°	3.79 / 6500	6.09 / 3600	8.42 / 2200	10.76 / 1500
50°	3.17 / 7800	5.10 / 4400	7.06 / 2700	9.02 / 1800
60°	2.47 / 10000	3.97 / 5300	5.50 / 3400	7.02 / 2300
70°	1.69 / 10000	2.72 / 8000	3.76 / 5500	4.80 / 3400
75°	1.28 / 10000	2.05 / 8000	2.84 / 5500	3.63 / 3400

SQ12SA4T



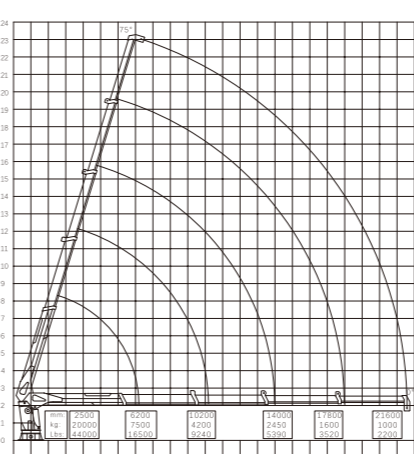
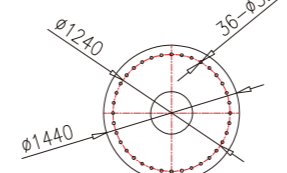
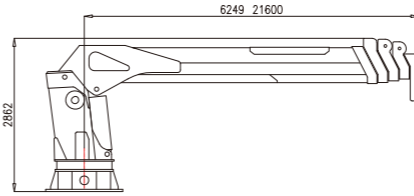
Boom Angle	boom length (m)			
	5.37	8.5	11.8	15.0
0°	5.37 / 5300	8.50 / 3000	11.8 / 1960	15.00 / 1230
10°	5.07 / 5390	8.37 / 3100	11.6 / 2000	14.77 / 1260
20°	5.04 / 5650	7.98 / 3200	11.0 / 2100	14.09 / 1330
30°	4.65 / 6150	7.36 / 3500	10.2 / 2250	12.99 / 1450
40°	4.11 / 9650	6.51 / 3950	9.03 / 2550	11.49 / 1600
50°	3.44 / 8200	5.45 / 4700	7.57 / 3000	9.63 / 1950
60°	2.68 / 10800	4.25 / 6000	5.90 / 3900	7.50 / 2500
70°	1.83 / 12000	2.90 / 8800	4.03 / 5700	5.13 / 3650
75°	1.39 / 12000	2.20 / 12000	3.05 / 7500	3.88 / 5000

SQ16SA5T



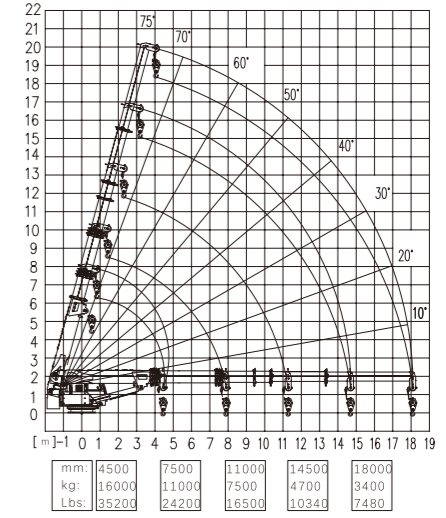
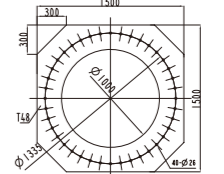
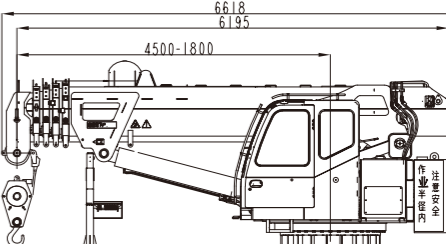
Boom Angle	boom length (m)			
	5.13	9.85	13.71	21.43
0°	5.13 / 6500	9.85 / 3600	13.71 / 2250	17.57 / 1600
10°	5.07 / 6600	9.70 / 3650	13.50 / 2250	17.30 / 1640
20°	4.76 / 6800	9.25 / 3830	12.88 / 2360	16.50 / 1720
30°	4.30 / 7380	8.53 / 4160	11.87 / 2560	15.21 / 1860
40°	3.69 / 8350	7.54 / 4700	10.50 / 2900	13.49 / 2110
50°	2.95 / 9960	6.32 / 5600	8.80 / 3450	11.28 / 2510
60°	2.06 / 13000	4.92 / 7200	6.85 / 4450	8.785 / 3230
70°	1.58 / 16000	3.36 / 10500	4.69 / 6500	6.00 / 4720
75°	1.32 / 16000	2.55 / 15000	3.54 / 8500	4.55 / 6250

SQ20SA5T



Boom Angle	boom length (m)				
	6.2	10.2	14	17.8	21.6
0°	6.20 / 7500	10.2 / 4200	14.0 / 2450	17.8 / 1600	21.6 / 1000
10°	6.00 / 7500	10.0 / 4800	13.8 / 2700	17.5 / 1750	21.3 / 1000
20°	5.80 / 8000	9.60 / 5500	13.2 / 2900	16.8 / 1880	20.3 / 1300
30°	5.40 / 9000	8.80 / 6200	12.2 / 3200	15.4 / 1950	18.7 / 1430
40°	4.70 / 11000	7.80 / 6400	10.6 / 3700	13.5 / 2200	16.5 / 1700
50°	4.00 / 12500	6.50 / 7800	9.00 / 5500	11.4 / 2650	13.8 / 1950
60°	3.00 / 17000	5.00 / 9600	7.00 / 6350	8.80 / 4100	10.7 / 3000
70°	2.00 / 20000	3.50 / 12500	4.50 / 7600	6.00 / 4900	7.20 / 3500
75°	1.95 / 20000	3.00 / 14000	4.00 / 8000	5.50 / 5200	6.50 / 3600

BL90SA5T



Boom Angle	boom length (m)			
	7.5	11	14.5	18
0°	7.5/11000	11/7500	14.5/4700	18/3400
10°	7.4/11200	10.8/7500	14.3/5000	17.7/3400
20°	7/12000	10.3/8000	13.6/5200	16.9/3600
30°	6.5/13000	9.5/8900	12.6/5900	15.6/3900
40°	5.7/14000	8.4/9700	11.1/6900	13.8/4500
50°	4.8/15000	7.1/10600	9.3/8000	11.6/5800
60°	3.8/16000	5.5/11000	7.3/9400	9/7200
70°	2.6/16000	3.8/11800	5/10700	6.2/8900
75°	1.9/16000	2.8/12000	3.8/11000	4.7/10200

项目	Item	单位 Unit	SQ10SA4T	SQ12SA4T	SQ16SA5T
最大起重质量	Max Lifting Capacity	Kg	10000	12000	16000
最大起重力矩	Max Lifting Moment	Ton.m	25	30	40
推荐功率	Recommend Power	KW	30	30	40
液压系统流量	Hydraulic System Flow	L/Min	63	63	80
液压系统压力	Hydraulic System Pressure	MPa	25	26	28
油箱容积	Oil Tank Capacity	L	160	160	260
起重机自重	Self Weight	Kg	3650	3900	6500
回转角度	Rotation Angle	°	360°全回转	330°	360°全回转

项目	Item	单位 Unit	SQ20SA5T	BL90SA5T
最大起重质量	Max Lifting Capacity	Kg	20000	16000
最大起重力矩	Max Lifting Moment	Ton.m	51	90
推荐功率	Recommend Power	KW	55	55
液压系统流量	Hydraulic System Flow	L/Min	80+63	120
液压系统压力	Hydraulic System Pressure	MPa	28	20
油箱容积	Oil Tank Capacity	L	270	450
起重机自重	Self Weight	Kg	7800	15000
回转角度	Rotation Angle	°	360°全回转	360°全回转

同时我司生产船用配套常规航行锚机、系泊绞车、系缆绞盘、拖带绞车、鲨鱼钳、起桥绞车、横移绞车、成套定位锚绞车系统等船用设备。

CNS 提供船用设备最持久耐用的解决方案。

Meanwhile CNS produces CONVENTIONAL NAVIGATION WINDLASS, MOORING WINCH, MOORING CAPSTAN, TOWING WINCH, SHARK FORK, HOISTING WINCH, TRANSFERRING WINCH AND Complete Set Of Positioning Anchor Winch System.

CNS offers the most durable deck equipment solutions.

